



*Building Quality Homes for Gladstone...*

Artists impression only

# Sandstone - 169m<sup>2</sup>

GABLE ROOF STYLE

## HOUSE FEATURES

- 3 LARGE BEDROOMS
- LARGE ENSUITE
- LARGE WALK IN ROBE
- CUSTOM MADE KITCHEN
- WALK IN PANTRY
- LINEN STORAGE
- SLIDING ROBE DOORS

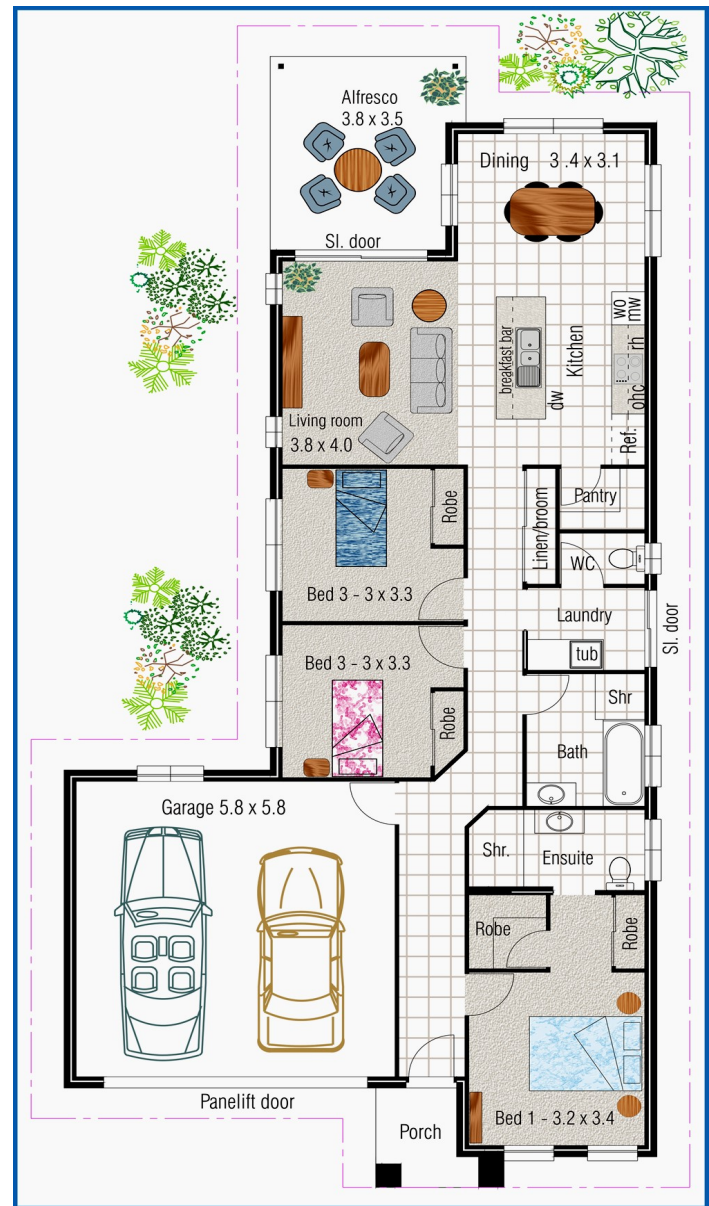
WIDTH x DEPTH  
12000 x 22820  
Inclusive of eaves

HOUSE AND LAND  
AVAILABLE

Ph 07 4978 7335 email: [office@tenhomes.com.au](mailto:office@tenhomes.com.au)  
Visit our office for information on building your next dream home...  
7c Helen St, Callemondah Gladstone  
[www.tenheggelerhomes.com.au](http://www.tenheggelerhomes.com.au)  
QBCC-1024727

VISIT OUR DISPLAY HOME

See website for address details  
[www.tenheggelerhomes.com.au](http://www.tenheggelerhomes.com.au)



TENHEGgeler BUILDING COMPANY PTY LTD TRADING AS

# TENHEGgeler HOMES

Copyright of this plan belongs to Tenheggeler Homes\*. Prices & Inclusions subject to change at anytime without notice.



*Elegance  
Style  
Quality*