



*Building Quality Homes for Gladstone...*

# Phelps 225m<sup>2</sup>

## HOUSE FEATURES

- 4 BEDROOMS
- LARGE ENSUITE
- DESIGNER KITCHEN
- WALK IN PANTRY
- LARGE ALFRESCO
- RENDERED FEATURES
- OPEN PLAN LIVING

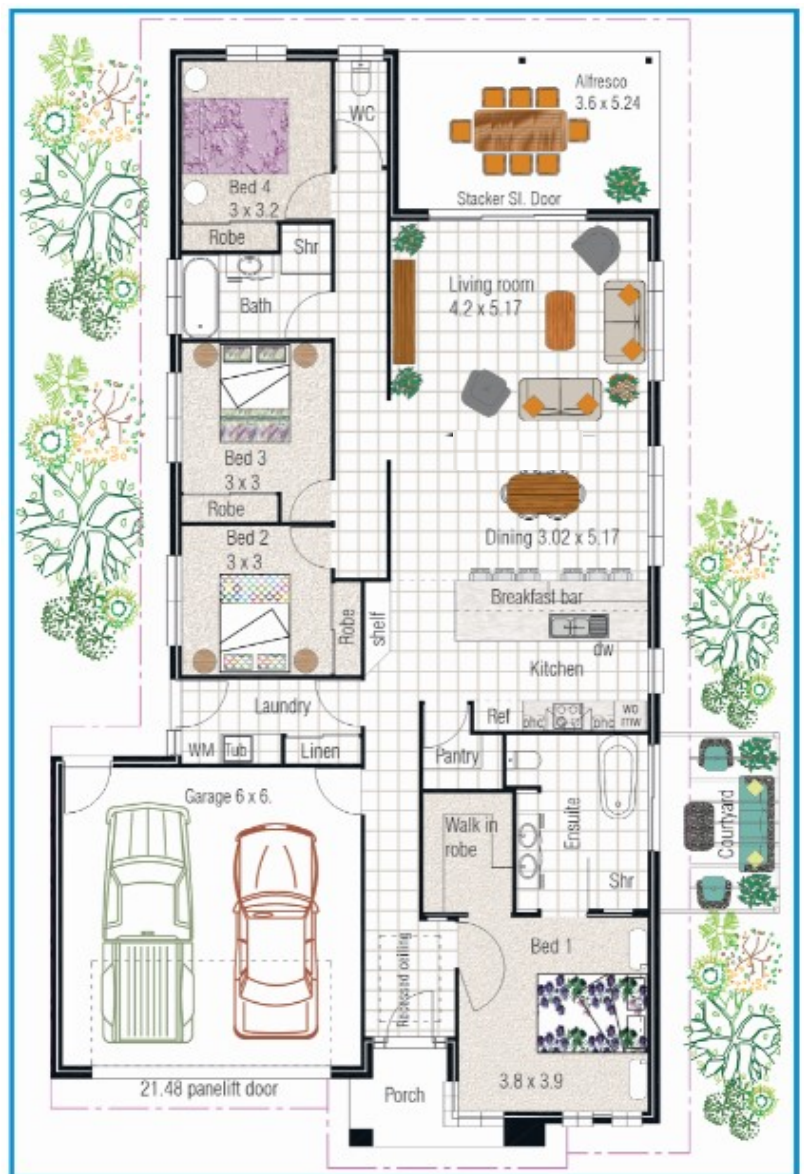
WIDTH x DEPTH  
12820 x 23010  
Inclusive of eaves

**HOUSE & LAND  
PACKAGES AVAILABLE**

Ph 07 4978 7335 email [office@tenhomes.com.au](mailto:office@tenhomes.com.au)  
Visit our office for information on building your next dream home...  
7c Helen St, Callemondah Gladstone  
[www.tenheggelerhomes.com.au](http://www.tenheggelerhomes.com.au)  
QBCC-1024727

**VISIT OUR DISPLAY HOME**

See website for address details  
[www.tenheggelerhomes.com.au](http://www.tenheggelerhomes.com.au)



TENHEGgeler BUILDING COMPANY PTY LTD TRADING AS

# TENHEGgeler HOMES

Copyright of this plan belongs to Tenheggeler Homes\*. Prices & Inclusions subject to change at anytime without notice.



*Elegance  
Style  
Quality*